

 INFINITY

Spray

Granite



Wetroom renovation

IRWINS
QUALITY
AGGREGATES

Spray granite is one of a kind coating system available to the UK market. Designed with the latest state-of-the-art technology, the product creates a natural granite finish using granite particles in a water-based resin.

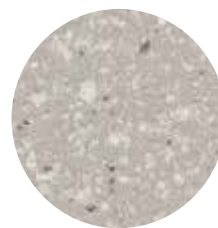
Suitable for domestic, commercial and industrial projects, the spray granite offers unlimited application options including tiles, render, concrete, bricks, timber, metal, wood and plastic. The only limitation is your imagination!

With its easy application and impressive features such as waterproof, high scratch resistance and durability, the spray granite is the ultimate solution for external house renovations including wall decoration and rendering.

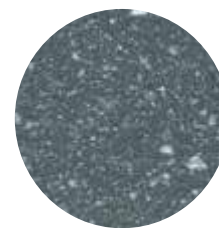
Fast-drying, non-toxic and odour-free qualities make the product an ideal choice for internal projects such as feature walls, kitchen units, fireplace areas and even stairs.

The spray granite can be a cost-effective way to refresh your bathroom without the full renovation. It can be applied directly over tiles for a smooth or rough seamless finish when sealed with ArmourGuard. It is anti-bacterial and mildew-resistant, making your surface clean and looking fresh for longer.

The product offers a large colour range with unlimited colour combinations to suit every taste and project.



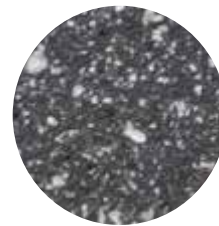
Cuikagh



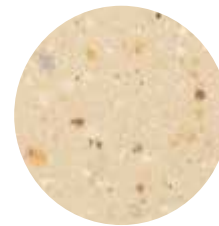
Crough Patrick



Errigal



Croughan



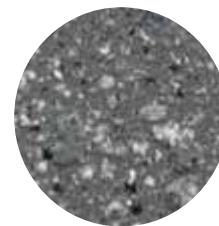
Brandon



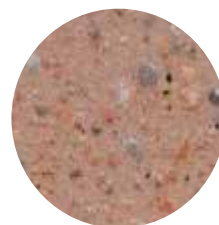
Bearnagh



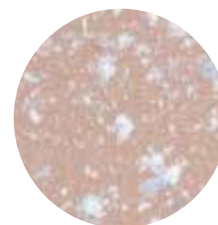
Benbulbin



Donard



Corra



Slemish



T: +44(0)28 8774 0362 E: sales@irwin-aggregates.com
55 Gortgonis Road, Coalisland Co. Tyrone BT71 4QG

www.irwin-aggregates.com

